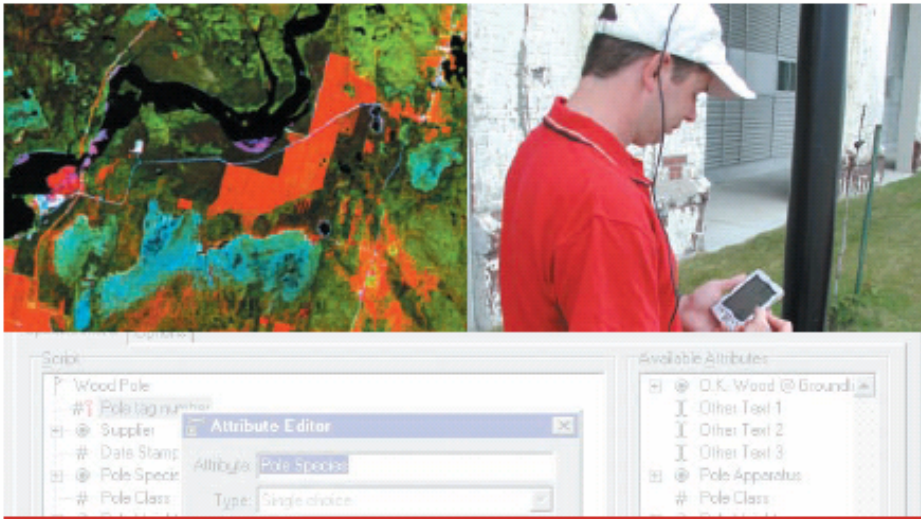




EZTag CE 1.21 Release Notes



Contents

EZTag CE 1.21.837 - March 2006.....	2
New features	2
Platform tested	2
Known issues list.....	2
EZTag CE 1.21.811 PR - December 2005	4
New features	4
Platform tested	4
Known issues list.....	4
EZTag CE 1.21.798 PR - November 2005	6
New features	6
Platform tested	6
Known issues list.....	6
EZTag CE 1.21.777 PR - October 2005.....	8
New features	8
Platform tested	8
Known issues list.....	8
EZTag CE 1.20.434 - November 2003	10
New features	10
Technical support.....	10

Release Notes

EZTag CE 1.21.837 - March 2006

New features

- Fixes and improvements on existing features.

Platform tested

- Laptop (or desktop) computer running Microsoft Windows 98 or higher;
- DAP Technologies handheld computers (CE2240, CE5240(X), CE5320(X), CE3240) including [Viasat 5000X](#) and [Viasat 3000X](#) systems;
- Windows Mobile devices (Pocket PC devices running Pocket PC OS 2002, Windows Mobile 2003, Windows Mobile 2003SE (Note 1)):
 - Asus Mypal 730W
 - HP iPaq HX2410
 - Garmin iQue M5

Note 1: Device based on an Intel ARM compatible 400 MHz or higher processor with at least 64 MB of RAM memory. Windows Mobile 5.0 is not supported.

Known issues list

Problem	It may happen that the automatic connection feature hangs the computer if a Bluetooth communication port is enabled in the GPS driver settings
Solution	Disable the automatic connection feature should fix the problem in most of the cases
Platform	All

Problem	It may happen that the auto-vertex feature stops during the capture of a continuous object
Solution	Restart EZTag CE should fix the problem in most of the cases
Platform	All

Problem	If the computer runs low in virtual memory during data recording, volatile memory file system may be corrupted
Solution	Avoid to run EZTag CE when the handheld computer is low in memory, always use a permanent non-volatile memory to store EZTag CE data and program files
Platform	DAP CE3240

Problem	ECW format raster images cannot be displayed correctly on handheld computer based on an ARM compatible processors (non-Intel)
Solution	ECW raster support is fully functional on mobile devices based on an Intel ARM processor (CPU)
Platform	Windows Mobile

Problem	Vector data in ESRI Shapefile format (.SHP) containing multipoint features is not supported
Solution	Vector data containing points feature are fully supported in EZTag CE
Platform	All

Problem	Empty plan view or partial display, loading layers slows down the computer
Solution	Verify the mapping system settings and the layer georeference, set a minimum scale for large layers and limit the size of the data to display
Platform	All

Problem	Mobile device can switch to suspend mode even if a survey is recording within EZTag CE
Solution	Disable the power management or turn on the device before continuing using EZTag CE
Platform	Windows Mobile

Problem	Virtual keyboard do not pop-up when the cursor enter in some edit fields
Solution	Open and close the virtual keyboard manually
Platform	All

Problem	Offset geometries are not correctly exported when using EZTag CE Feature Conversion Wizard
Solution	Use EZSurv Graphics module to export offset geometries
Platform	Windows

For more detailed information on known issues, please visit the technical support Web site at: http://www.viasat.gc.ca/eng/support_faq.asp.

EZTag CE 1.21.811 PR - December 2005

New features

- Added support for GPS receiver connection using a Bluetooth radio link;
- New installation program;
- New portuguese version;
- Fixes and improvements on existing features.

Platform tested

- Laptop (or desktop) computer running Microsoft Windows 98 or higher;
- DAP Technologies handheld computers (CE5240(X), CE5320(X), CE8640, CE3240) including [Viasat 5000X](#) and [Viasat 3000X](#) systems;
- Windows Mobile devices (Pocket PC devices running Pocket PC OS 2002 or higher (Note 1)):
 - Asus Mypal 730W
 - HP iPaq HX2410
 - Garmin iQue M5

Note 1: Device based on an Intel ARM compatible 400 MHz or higher processor with at least 64 MB of RAM memory.

Known issues list

Problem	It may happen that the automatic connection feature hangs the computer if a Bluetooth communication port is enabled in the GPS driver settings
Solution	Disable the automatic connection feature should fix the problem in most of the cases
Platform	All

Problem	It may happen that the auto-vertex feature stops during the capture of a continuous object
Solution	Restart EZTag CE should fix the problem in most of the cases
Platform	All

Problem	It may happen that the Microsoft .Net Framework installation failed during EZTag CE setup
Solution	Install Microsoft .Net Framework manually, then run the EZTag CE setup again
Platform	Windows

Problem	If the computer runs low in virtual memory during data recording, volatile memory file system may be corrupted
Solution	Avoid to run EZTag CE when the handheld computer is low in memory, always use a permanent non-volatile memory to store EZTag CE data and program files
Platform	DAP CE3240

Problem	It may happen that the tagging command bar can be displayed empty
Solution	Verify the dictionary folder set in EZTag CE preferences, if the problem persist soft resetting the computer should fix the problem in most of the cases
Platform	All

Problem	ECW format raster images cannot be displayed correctly on handheld computer based on an ARM compatible processors (non-Intel)
Solution	ECW raster support is fully functional on mobile devices based on an Intel ARM processor

	(CPU)
Platform	Windows Mobile
Problem	Vector data in ESRI Shapefile format (.SHP) containing multipoint features is not supported
Solution	Vector data containing points feature are fully supported in EZTag CE
Platform	All
Problem	Empty plan view or partial display, loading layers slows down the computer
Solution	Verify the mapping system settings and the layer georeference, set a minimum scale for large layers and limit the size of the data to display
Platform	All
Problem	A survey can be opened more the 5 days after the creation date in EZTag CE, that makes automatic processing failure in EZSurv Processor
Solution	Avoid to open a survey more than 5 days after the creation date within EZTag CE
Platform	All
Problem	Mobile device can switch to suspend mode even if a survey is recording within EZTag CE
Solution	Disable the power management or turn on the device before continuing using EZTag CE
Platform	Windows Mobile
Problem	Virtual keyboard do not pop-up when the cursor enter in some edit fields
Solution	Open and close the virtual keyboard manually
Platform	All

For more detailed information on known issues, please visit the technical support Web site at:
http://www.viasat.gc.ca/eng/support_faq.asp.

EZTag CE 1.21.798 PR - November 2005

New features

- Improved performance for plan view display;
- Improved reliability on GPS trace;
- Fixes and improvements on existing features.

Platform tested

- Laptop (or desktop) computer running Microsoft Windows 98 or higher;
- DAP Technologies handheld computers (CE5240(X), CE5320(X), CE8640, CE3240) including [Viasat 5000X](#) and [Viasat 3000X](#) systems;
- Windows Mobile devices (Pocket PC devices running Pocket PC OS 2002 or higher (Note 1)).

Note 1: Device based on an Intel ARM compatible 400 MHz or higher processor with at least 64 MB of RAM memory.

Known issues list

Problem	It may happen that the auto-vertex feature stops during the capture of a continuous object
Solution	Restart EZTag CE should fix the problem in most of the cases
Platform	All
Problem	It may happen that the Microsoft .Net Framework installation failed during EZTag CE setup
Solution	Install Microsoft .Net Framework manually, then run the EZTag CE setup again
Platform	Windows
Problem	It may happen that some object segments get their trace status inversed
Solution	Use pure vertex feature as object vertices instead of a point feature
Platform	All
Problem	It may happen that a survey cannot be started even if the GPS constellation is acceptable
Solution	Soft reset the handheld computer should fix the problem in most of the cases
Platform	All
Problem	If the computer runs low in virtual memory during data recording, volatile memory file system may be corrupted
Solution	Avoid to run EZTag CE when the handheld computer is low in memory, always use a permanent non-volatile memory to store EZTag CE data and program files
Platform	DAP CE3240
Problem	It may happen that the tagging command bar can be displayed empty
Solution	Verify the dictionary folder set in EZTag CE preferences, if the problem persist soft resetting the computer should fix the problem in most of the cases
Platform	All

Problem	ECW format raster images cannot be displayed correctly on handheld computer based on an ARM compatible processors (non-Intel)
Solution	ECW raster support is fully functional on mobile devices based on an Intel ARM processor (CPU)
Platform	Windows Mobile

Problem	Vector data in ESRI Shapefile format (.SHP) containing multipoint features is not supported
Solution	Vector data containing points feature are fully supported in EZTag CE
Platform	All

Problem	Empty plan view or partial display, loading layers slows down the computer
Solution	Verify the mapping system settings and the layer georeference, set a minimum scale for large layers and limit the size of the data to display
Platform	All

Problem	A survey can be opened more the 5 days after the creation date in EZTag CE, that makes automatic processing failure in EZSurv Processor
Solution	Avoid to open a survey more than 5 days after the creation date within EZTag CE
Platform	All

Problem	Mobile device can switch to suspend mode even if a survey is recording within EZTag CE
Solution	Disable the power management or turn on the device before continuing using EZTag CE
Platform	Windows Mobile

Problem	Virtual keyboard do not pop-up when the cursor enter in some edit fields
Solution	Open and close the virtual keyboard manually
Platform	All

For more detailed information on known issues, please visit the technical support Web site at: http://www.viasat.gc.ca/eng/support_faq.asp.

EZTag CE 1.21.777 PR - October 2005

New features

- Added support for Enhanced Compression Wavelet (.ECW) raster images display;
- Improved reliability when committing data on disk;
- Fixes and improvements on existing features.

Platform tested

- Laptop (or desktop) computer running Microsoft Windows 98 or higher;
- DAP Technologies handheld computers (CE5240(X), CE5320(X), CE8640, CE3240) including [Viasat 5000X](#) and [Viasat 3000X](#) systems;
- Windows Mobile devices (Pocket PC devices running Pocket PC OS 2002 or higher (Note 1)).

Note 1: Device based on an Intel ARM compatible 400 MHz or higher processor with at least 64 MB of RAM memory.

Known issues list

Problem	It may happen that a survey cannot be started even if the GPS constellation is acceptable
Solution	Soft reset the handheld computer should fix the problem in most of the cases
Platform	All

Problem	It may happen that an alarm is active even if the GPS constellation is acceptable
Solution	Soft reset the handheld computer should fix the problem in most of the cases
Platform	All

Problem	If the computer runs low in virtual memory during data recording, volatile memory file system may be corrupted
Solution	Avoid to run EZTag CE when the handheld computer is low in memory, always use a permanent non-volatile memory to store EZTag CE data and program files
Platform	DAP CE3240

Problem	It may happen that the tagging command bar can be displayed empty
Solution	Verify the dictionary folder set in EZTag CE preferences, if the problem persist soft resetting the computer should fix the problem in most of the cases
Platform	All

Problem	EZTag CE may quick exit when using the pause feature during the capture of linear element
Solution	Start EZTag CE normally and open the previous survey before continuing
Platform	All

Problem	EZTag CE may quick exit after saving the preferences
Solution	Start EZTag CE normally before continuing
Platform	Windows Mobile

Problem	ECW format raster images cannot be displayed correctly on handheld computer based on an ARM compatible processors (non-Intel)
Solution	ECW raster support is fully functional on mobile devices based on an Intel ARM processor (CPU)
Platform	Windows Mobile

Problem	Vector data in ESRI Shapefile format (.SHP) containing multipoint features is not supported
Solution	Vector data containing points feature are fully supported in EZTag CE
Platform	All

Problem	EZTag CE may freeze the handheld computer when establishing the connection with the GPS receiver
Solution	Reset the GPS receiver (if external) before attempting to connect, if the GPS receiver is embedded in the unit soft reset the handheld computer
Platform	All

Problem	Empty plan view or partial display, loading layers slows down the computer
Solution	Verify the mapping system settings and the layer georeference, set a minimum scale for large layers and limit the size of the data to display
Platform	All

Problem	A survey can be opened more the 5 days after the creation date in EZTag CE, that makes automatic processing failure in EZSurv Processor
Solution	Avoid to open a survey more than 5 days after the creation date within EZTag CE
Platform	All

Problem	Mobile device can switch to suspend mode even if a survey is recording within EZTag CE
Solution	Disable the power management or turn on the device before continuing using EZTag CE
Platform	Windows Mobile

Problem	Virtual keyboard do not pop-up when the cursor enter in some edit fields
Solution	Open and close the virtual keyboard manually
Platform	Windows Mobile

For more detailed information on known issues, please visit the technical support Web site at:
http://www.viasat.qc.ca/eng/support_faq.asp.

EZTag CE 1.20.434 - November 2003

New features

- New EZTag CE Viewer only module running on Microsoft Windows;
- Added support to save features before the end of GPS capture;
- Added auto-save and project recovery for surveys data;
- Added support to quit EZTag CE even if some features are not closed;
- Added emergency exit to close the survey if the computer run low in resources;
- Added support to trace linear elements in ESRI Shapefile format directly (experimental);
- New navigation view acting as a compass;
- Fixes and improvements on existing features.

Technical support

E-mail information requests can be sent to support@viasat-geo.com.

If you include data with your RFI, please compress them with an appropriate application such as WinZIP and attach the compressed file to your e-mail.

Telephone Support

Our toll-free number is (888) 495-6501 (Canada).

Customers outside the country must call (514) 495-6500.

Ask for our GPS technical support.

This service is available from 9:00 a.m. to 5:00 p.m. EST (US and Canada). After 5:00 p.m. please leave a short voice mail message for our technical support people, including your coordinates and a summary of your question.

Fax Support

Our fax number is (514) 495-4191.